



# Plusline ES Small

## Plusline ES Small 118mm 2y 160W R7s 230V 1BB

Mains-voltage halogen linear lamp with superior quality and reliability. Offers very long lifetime and crisp halogen light. Ideal solution for decorative luminaires and for security or task lighting floodlights.

### Product data

General Information	
Cap-Base	R7S [ R7s]
Operating Position	UNIVERSAL [ Any or Universal (U)]
Nominal Lifetime (Nom)	2000 h
Switching Cycle	8000X

Light Technical	
Luminous Flux (Nom)	3100 lm
Luminous Flux (Rated) (Nom)	3100 lm
Correlated Color Temperature (Nom)	2900 K
Luminous Efficacy (Rated) (Nom)	19.4 lm/W
Color Rendering Index (Nom)	100
LLMF at End of Nominal Lifetime (Min)	80 %

Operating and Electrical	
Power (Rated) (Nom)	160.0 W
Lamp Current (Nom)	0.70 A
Wattage Equivalent	200 W
Starting Time (Nom)	0.0 s
Warm Up Time to 60% Light (Nom)	instant full light
Power Factor (Nom)	1
Voltage (Nom)	230 V

Controls and Dimming	
Dimmable	Yes

Mechanical and Housing	
Bulb Finish	Clear

Approval and Application	
Energy Efficiency Label (EEL)	D
Energy Consumption kWh/1000 h	160 kWh

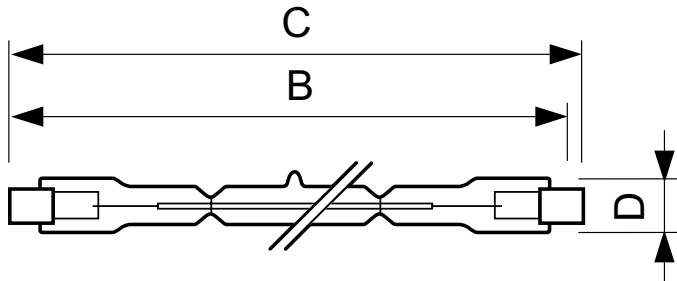
Luminaire Design Requirements	
Bulb Temperature (Max)	900 °C
Pinch Temperature (Max)	350 °C

Product Data	
Full product code	872790085219600
Order product name	Plusline ES Small 118mm 2y 160W R7s 230V 1BB
EAN/UPC - Product	8727900852196
Order code	924587544210
Numerator - Quantity Per Pack	1
Numerator - Packs per outer box	100
Material Nr. (12NC)	924587544210
Net Weight (Piece)	9.000 g

## Plusline ES Small

### Dimensional drawing



Product	D (max)	B (max)	B	B (min)	C (max)
Plusline ES Small 118mm 2y 160W R7s 230V 1BB	11 mm	115.8 mm	114.2 mm	112.6 mm	118 mm

DESmall 118mm 2y 160W R7s 230V T11 CL

